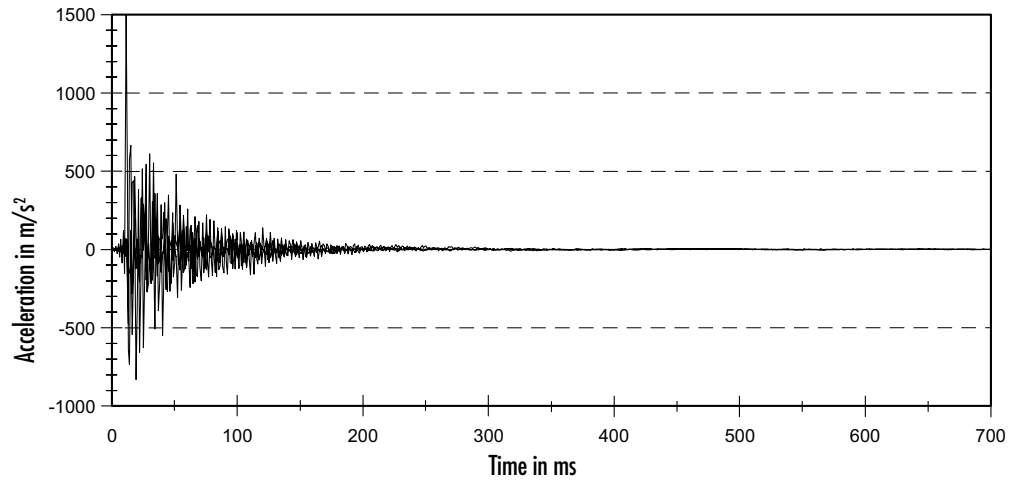


## powRgrip SYSTEM

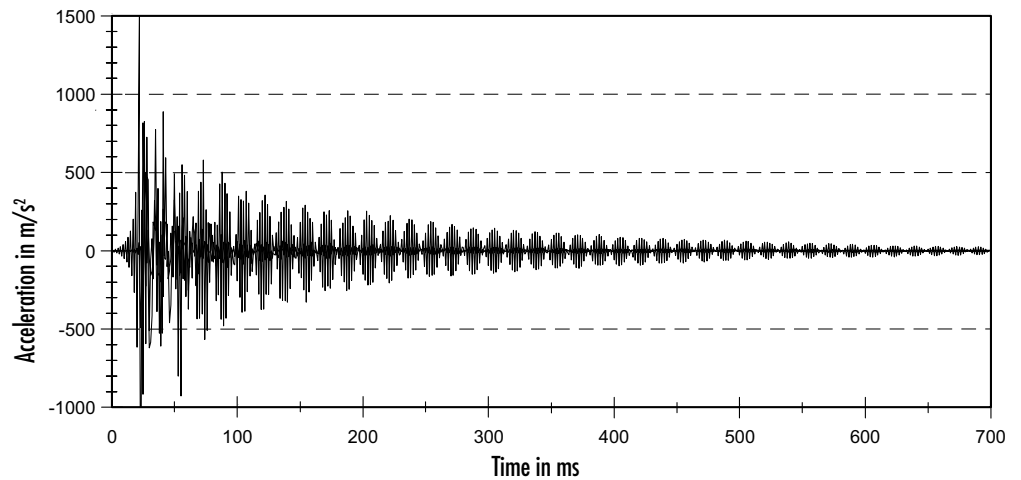
### Vibration Decay Chart



REGO-FIX® Xtended Length Toolholder with MFD™ technology.



Standard toolholder



This New **MICRO-FRICTION DAMPENING™ (MFD)** technology (pat. pending) from REGO-FIX allows the holders to dissipate vibrations faster than standard long reach holders. Dampening the vibrations faster means that your cutting tool, part and spindle will see less vibrations resulting in better surface finishes, longer tool life and less spindle wear.

Machining parameters have to be adapted to the gauge length of the Xtended Length Toolholders

# powRgrip SYSTEM



The REGO-FIX powRgrip® is an extremely precise, safe, and cost-effective Press-Fit system, perfect for your high-speed, high-performance cutting applications.

The system delivers superior run-out using a toolholder, versatile collet, and a compact bench-top hydraulic clamping unit.

The collet's built in set screw provides precise presetting, repeatable to less than 0.0004" (10µ).

Its slightly tapered shape, combined with the 9-ton tabletop clamping unit, deliver the highest clamping force on the market without dangerous heat or hazardous EMF radiation.

With a simple 10-second clamping cycle and a tool that's ready for immediate use without the need for cool-down, you can complete tool changes in less than 30 seconds

## Automatic Machine

Type	Part No.	Description
PGU 9000 A	7610.90100	110 V machine
APG 910	7611.10900	PG 10 clamping insert
APG 915	7611.15900	PG 15 clamping insert
APG 925	7611.25900	PG 25 clamping insert
APG 932	7611.32900	PG 32 clamping insert

PGU 9000 automatic clamping unit with push-button operation and auto clamping insert recognition. Designed to make operation easy, fast and reliable. Easy interchangeable inserts and safety interlocks make the machine safe for operators.

## Compact Machine

Type	Part No.	Description	Measurement W x D x H	Incl. Taper Cleaner
PGC 2510	7621.25109	powRgrip® Compact hydraulic clamping unit	450 x 492 x 280	
APC 25	7622.25000	Insert for PGC 2510 for PG 25 toolholders		■
APC 15	7622.15000	Insert for PGC 2510 for PG 15 toolholders		■
APC 10	7622.10000	Insert for PGC 2510 for PG 10 toolholders		■

PGC hand pumps offer a price advantage over the PGU units while still performing the task of pressing in tools. The operator actuates the pressure by use of the lever arm until the desired pressure is reached.

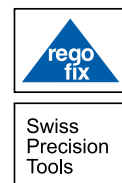


REGO-FIX Tool Corp.  
Phone: (317) 870-5959

7752 Moller Rd.  
Fax: (317) 870-5955

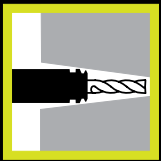
Indianapolis, IN 46268  
Toll Free: (800) 999-7346

www.rego-fix.com  
Email: Info@rego-fix.com

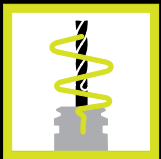


# Xtended Length

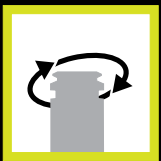
## powRgrip SYSTEM



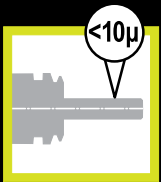
Minimal outside dimensions  
Special long and slim design



Vibration damping design (pat. pend.)



100% balanced



T.I.R.  $<10\ \mu\text{m}$  for the whole system  $3 \times D$

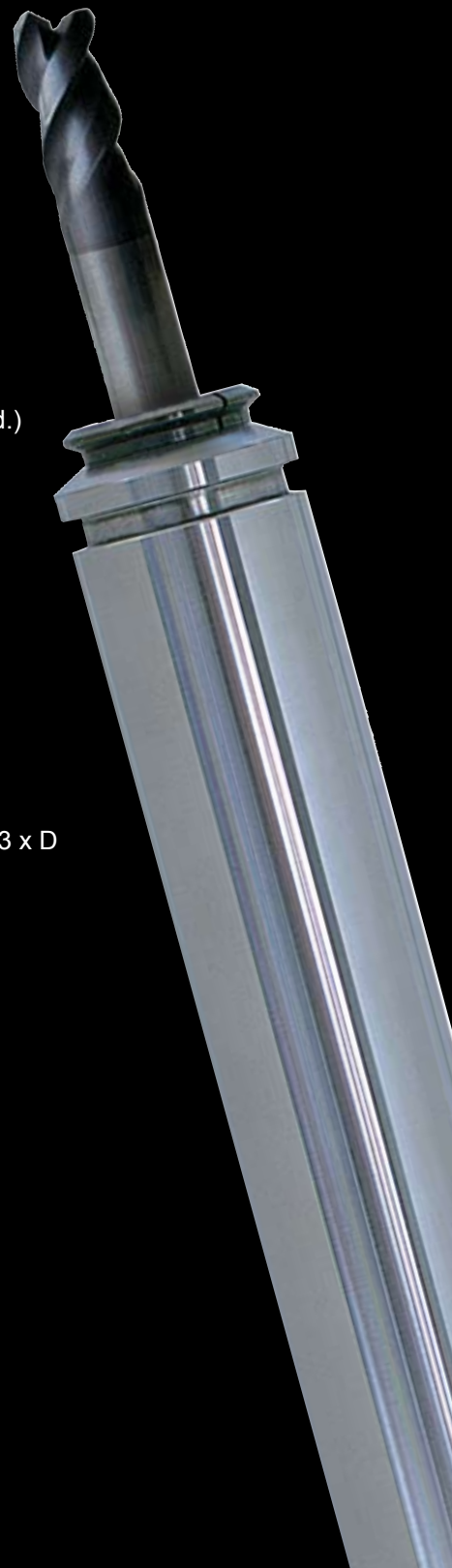


Delivery 2-4 weeks from order date

Made in  
Switzerland



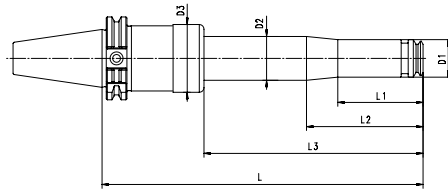
Swiss  
Precision  
Tools



<sup>®</sup>  
**REGO-FIX**

# REGO-FIX®

**CAT | PG**  
ANSI B5.50



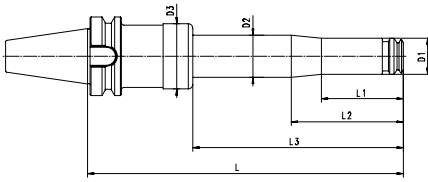
**BT | PG**  
MAS 403

Type	Part No.	D1 [mm]	D2 [mm]	D3 [mm]	L1 [mm]	L2 [mm]	L3 [inch]	L [inch]
CAT40 / PG 10 x 8 XL	8843.71031	16	28	42	31	84	4	8.00
CAT40 / PG 10 x 10 XL	8843.71081	16	28	42	31	84	4	10.00
CAT40 / PG 10 x 12 XL	8843.71131	16	28	42	31	124	8	12.00
CAT40 / PG 10 x 14 XL	8843.71181	16	28	42	31	124	8	14.00
CAT40 / PG 15 x 8 XL	8843.73031	24	28	42	55	75	4	8.00
CAT40 / PG 15 x 10 XL	8843.73081	24	28	42	55	75	4	10.00
CAT40 / PG 15 x 12 XL	8843.73131	24	28	42	55	125	8	12.00
CAT40 / PG 15 x 14 XL	8843.73181	24	28	42	55	125	8	14.00
CAT 40/PG 25 x 8**	4340.72591	40	-	52	-	-	-	8.00
CAT40 / PG 25 x 10 XL	8843.76081	40	-	52	-	-	4	10.00
CAT40 / PG 25 x 14 XL	8843.76181	40	-	52	-	-	8	14.00
CAT50 / PG 10 x 8 XL	8853.71031	16	28	42	31	84	4	8.00
CAT50 / PG 10 x 10 XL	8853.71081	16	28	42	31	84	4	10.00
CAT50 / PG 10 x 12 XL	8853.71131	16	28	42	31	124	8	12.00
CAT50 / PG 10 x 14 XL	8853.71181	16	28	42	31	124	8	14.00
CAT50 / PG 15 x 8 XL	8853.73031	24	28	42	55	75	4	8.00
CAT50 / PG 15 x 10 XL	8853.73081	24	28	42	55	75	4	10.00
CAT50 / PG 15 x 12 XL	8853.73131	24	28	42	55	125	8	12.00
CAT50 / PG 15 x 14 XL	8853.73181	24	28	42	55	125	8	14.00
CAT50 / PG 25 x 10 XL	8853.76081	40	-	52	-	-	4	10.00
CAT50 / PG 25 x 14 XL	8853.76181	40	-	52	-	-	8	14.00

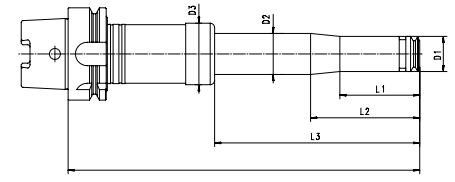
\*\*Holder is mono-block design and does not feature vibration dampening technology.

Type	Part No.
BT40 / PG 10 x 220 XL	8841.71050
BT40 / PG 10 x 260 XL	8841.71090
BT40 / PG 10 x 300 XL	8841.71130
BT40 / PG 10 x 320 XL	8841.71150
BT40 / PG 10 x 360 XL	8841.71190
BT40 / PG 10 x 400 XL	8841.71230
BT40 / PG 15 x 220 XL	8841.73050
BT40 / PG 15 x 260 XL	8841.73090
BT40 / PG 15 x 300 XL	8841.73130
BT40 / PG 15 x 320 XL	8841.73150
BT40 / PG 15 x 360 XL	8841.73190
BT40 / PG 15 x 400 XL	8841.73230
BT40 / PG 25 x 226 XL	8841.76050
BT40 / PG 25 x 326 XL	8841.76150
BT50 / PG 10 x 240 XL	8851.71070
BT50 / PG 10 x 260 XL	8851.71090
BT50 / PG 10 x 300 XL	8851.71130
BT50 / PG 10 x 340 XL	8851.71170
BT50 / PG 10 x 360 XL	8851.71190
BT50 / PG 10 x 400 XL	8851.71230
BT50 / PG 15 x 240 XL	8851.73070
BT50 / PG 15 x 260 XL	8851.73090
BT50 / PG 15 x 300 XL	8851.73130
BT50 / PG 15 x 340 XL	8851.73170
BT50 / PG 15 x 360 XL	8851.73190
BT50 / PG 15 x 400 XL	8851.73230
BT50 / PG 25 x 240 XL	8851.76070
BT50 / PG 25 x 340 XL	8851.76170

# Xtended Length (XL) Toolholders



**HSK | PG**  
DIN 69893



D1 [mm]	D2 [mm]	D3 [mm]	L1 [mm]	L2 [mm]	L3 [mm]	L [mm]
16	28	42	31	84	140	220
16	28	42	31	84	140	260
16	28	42	31	84	140	300
16	28	42	31	124	240	320
16	28	42	31	124	240	360
16	28	42	31	124	240	400
24	28	42	55	75	140	220
24	28	42	55	75	140	260
24	28	42	55	75	140	300
24	28	42	55	125	240	320
24	28	42	55	125	240	360
24	28	42	55	125	240	400
40	-	52	-	-	140	226
40	-	52	-	-	240	326
16	28	42	31	84	140	240
16	28	42	31	84	140	260
16	28	42	31	84	140	300
16	28	42	31	124	240	340
16	28	42	31	124	240	360
16	28	42	31	124	240	400
24	28	42	55	75	140	240
24	28	42	55	75	140	260
24	28	42	55	75	140	300
24	28	42	55	125	240	340
24	28	42	55	125	240	360
24	28	42	55	125	240	400
40	-	52	-	-	140	240
40	-	52	-	-	240	340

Type	Part No.	D1 [mm]	D2 [mm]	D3 [mm]	L1 [mm]	L2 [mm]	L3 [mm]	L [mm]
HSK-A 63 / PG 10 x 240 XL	8865.71070	16	28	42	31	84	140	240
HSK-A 63 / PG 10 x 260 XL	8865.71090	16	28	42	31	84	140	260
HSK-A 63 / PG 10 x 300 XL	8865.71130	16	28	42	31	84	140	300
HSK-A 63 / PG 10 x 340 XL	8865.71170	16	28	42	31	124	240	340
HSK-A 63 / PG 10 x 360 XL	8865.71190	16	28	42	31	124	240	360
HSK-A 63 / PG 10 x 400 XL	8865.71230	16	28	42	31	124	240	400
HSK-A 63 / PG 15 x 240 XL	8865.73070	24	28	42	55	75	140	240
HSK-A 63 / PG 15 x 260 XL	8865.73090	24	28	42	55	75	140	260
HSK-A 63 / PG 15 x 300 XL	8865.73130	24	28	42	55	75	140	300
HSK-A 63 / PG 15 x 340 XL	8865.73170	24	28	42	55	125	240	340
HSK-A 63 / PG 15 x 360 XL	8865.73190	24	28	42	55	125	240	360
HSK-A 63 / PG 15 x 400 XL	8865.73230	24	28	42	55	125	240	400
HSK-A 63 / PG 25 x 240 XL	8865.76070	40	-	52	-	-	140	240
HSK-A 63 / PG 25 x 260 XL	8865.76090	40	-	52	-	-	140	260
HSK-A 63 / PG 25 x 340 XL	8865.76170	40	-	52	-	-	240	340
HSK-A 63 / PG 25 x 360 XL	8865.76190	40	-	52	-	-	240	360
HSK-A 100 / PG 10 x 240 XL	8885.71070	16	28	42	31	84	140	240
HSK-A 100 / PG 10 x 300 XL	8885.71130	16	28	42	31	84	140	300
HSK-A 100 / PG 10 x 340 XL	8885.71170	16	28	42	31	124	240	340
HSK-A 100 / PG 10 x 400 XL	8885.71230	16	28	42	31	124	240	400
HSK-A 100 / PG 15 x 240 XL	8885.73070	24	28	42	55	75	140	240
HSK-A 100 / PG 15 x 300 XL	8885.73110	24	28	42	55	75	140	300
HSK-A 100 / PG 15 x 340 XL	8885.73170	24	28	42	55	125	240	340
HSK-A 100 / PG 15 x 400 XL	8885.73230	24	28	42	55	125	240	400
HSK-A 100 / PG 25 x 246 XL	8885.76070	40	-	52	-	-	140	246
HSK-A 100 / PG 25 x 346 XL	8885.76170	40	-	52	-	-	240	346

## Collets | PG



PG REGO-FIX®  
Standard collet h6



PG-CF REGO-FIX®  
With coolant channels  
for peripheral cooling



PG10-MB REGO-FIX®  
Collet with microbore h6  
(0.200 – 1.5875 mm)

Ø [mm]	Ø [inch]	PG 10 Part No.	PG 10-CF Part No.	PG 15 Part No.	PG 15-CF Part No.	PG 25 Part No.	PG 25-CF Part No.
2.000	–	1710.02000	–	–	–	–	–
2.500	–	1710.02500	–	–	–	–	–
3.000	–	1710.03000	1710.03002	1715.03000	1715.03002	1725.03000	1725.03002
3.175	1/8"	1710.03181	1710.03183	1715.03181	1715.03183	1725.03181	1725.03183
3.500	–	1710.03500	–	1715.03500	–	1725.03500	–
4.000	–	1710.04000	1710.04002	1715.04000	1715.04002	1725.04000	1725.04002
4.500	–	1710.04500	–	1715.04500	–	1725.04500	–
4.763	3/16"	1710.04761	1710.04763	1715.04761	1715.04763	1725.04761	1725.04763
5.000	–	1710.05000	1710.05002	1715.05000	1715.05002	1725.05000	1725.05002
5.500	–	1710.05500	–	1715.05500	–	1725.05500	–
6.000	–	1710.06000	1710.06002	1715.06000	1715.06002	1725.06000	1725.06002
6.350	1/4"	1710.06351	1710.06353	1715.06351	1715.06353	1725.06351	1725.06353
7.000	–	–	–	1715.07000	1715.07002	1725.07000	1725.07002
7.938	5/16"	–	–	1715.07941	1715.07943	1725.07941	1725.07943
8.000	–	–	–	1715.08000	1715.08002	1725.08000	1725.08002
9.000	–	–	–	1715.09000	1715.09002	1725.09000	1725.09002
9.525	3/8"	–	–	1715.09521	1715.09523	1725.09521	1725.09523
10.000	–	–	–	1715.10000	1715.10002	1725.10000	1725.10002
11.000	–	–	–	–	–	1725.11000	1725.11002
11.113	7/16"	–	–	–	–	1725.11111	1725.11113
12.000	–	–	–	–	–	1725.12000	1725.12002
12.700	1/2"	–	–	–	–	1725.12701	1725.12703
14.000	–	–	–	–	–	1725.14000	1725.14002
14.288	9/16"	–	–	–	–	1725.14291	1725.14293
15.875	5/8"	–	–	–	–	1725.15881	1725.15883
16.000	–	–	–	–	–	1725.16000	1725.16002
18.000	–	–	–	–	–	1725.18000	1725.18002
19.050	3/4"	–	–	–	–	1725.19051	1725.19053
20.000	–	–	–	–	–	1725.20000	1725.20002

PG Collets do not have a clamping range, requires h6 tolerance shanks